

Learn about a custom design water feature at a dental surgery reception.

Email not displaying correctly?

[View it in your browser.](#)



ART DE DENTE: RECEPTION AREA WATER FEATURE

Modular Water Feature | Glass, Steel, LICOM76™

H2O Designs created a stunning floor-to-ceiling water feature with a planter box base to incorporate an element of greenery into the reception area. We were approached by Prodent, a company specialising in healthcare fitouts and worked with the clients to achieve the best design for the dental surgery.

The brief specified the inclusion of the Art De Dente logo; materials and finishes to match the surrounding interiors and the overall theme of the practice as well as some plants to promote a natural healthy feel. We also had to consider the height of the reception table in front and the stand-alone placement of the water feature.

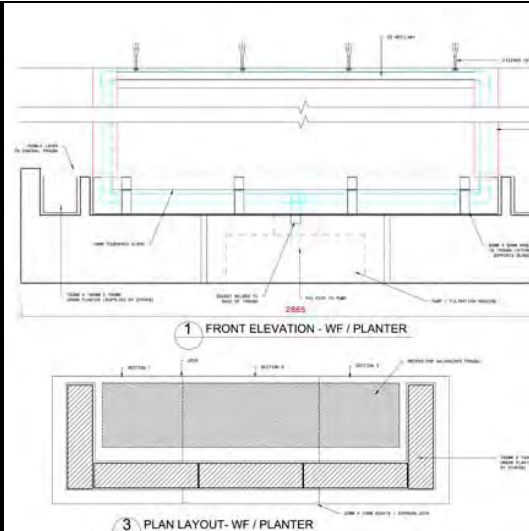
The final design served a multifunctional purpose by being a beautiful backdrop to the

entrance space of the surgery, while screening a storage room door from visitors. The rust copper finish also ties in with the LICOM76™ planter boxes scattered around the dental surgery foyer.

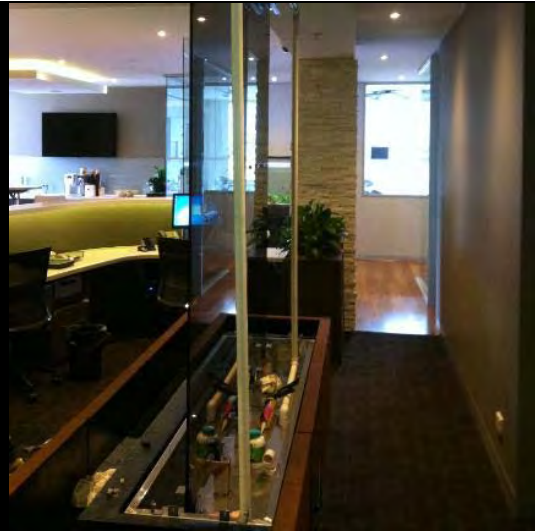


The completed water feature includes a dark tinted glass water wall with a custom-designed spillway that delivers a smooth tranquil flow of water without splash. The dark smokey colour of the glass panel was chosen to stand out against the surrounding light tones while emphasising the back-lit sandblasted logo and butterfly artwork. The Art De Dente signage was further highlighted with a powder coated aluminium cutout, protruding from the water wall to create a three-dimensional effect.

The water feature was designed to be manufactured in modular components, which accommodated for access restrictions in the elevator and door openings to the 17th floor. The components were then assembled onsite to create a complete feature with seamless surfaces. The plumbing was concealed within the 'picture frame' which holds the glass water wall, while the pump and filtration ionising unit was hidden underneath the LICOM76™ planter box.



DOCUMENTATION



INSTALLATION



INSTALLATION



COMPLETION





Also..

- Visit our new [Youtube](#) page to view a slideshow of past H2O Designs custom-built water features.
- While you're there, why not check out the [interview](#) our Director, Robert Truccolo, did with Shaynna Blaze to discuss the complexities of water feature design.
- So you have a water feature, now what? Learn about the importance of water feature maintenance at our [Creative Space Blog](#).
- Let our new [website](#) and gallery of projects be an inspiration for your next design.
- Contact us so we can help you find the perfect solution for your residential or commercial project.
- Stay tuned to learn how your design can benefit from the possibilities of manufacturing in China.



Facebook



Twitter



Pinterest



LinkedIn



Email



Like



Tweet



Forward to Friend



Share



+1

18 Sackville St Collingwood 3066, Australia | e: info@h2odesigns.com.au | p: +61 3 9419 6014



h2odesigns[®]
www.h2odesigns.com.au

[H2O DESIGNS](#) / [BLOG](#) / [LICOM76™](#) / [WATER FEATURES](#) / [PLANTER BOXES](#) / [ROOFTOP GARDENS](#)

Copyright © 2013 H2O Designs, All rights reserved.

You are receiving this email because you opted in at our website h2odesigns.com.au.

Our mailing address is:

H2O Designs

18 Sackville St, Collingwood, Victoria, Australia

Collingwood, VIC 3066
Australia

[Add us to your address book](#)

[unsubscribe from this list](#) [update subscription preferences](#)