



**h2o designs**<sup>®</sup>  
[www.h2odesigns.com.au](http://www.h2odesigns.com.au)

PLANTER BOX SYSTEMS

LICOM76™



# PLANTER BOX SYSTEMS

LICOM76™



## INTRODUCTION

Over the last two decades H2O Designs have been designing and manufacturing various ranges of Planter Box Systems that provide an alternative solution to planter boxes built from traditional methods.

Planter Boxes manufactured by H2O Designs are built from LICOM76™, a lightweight ICF composite material that utilizes an innovative modular building technology. This allows accelerated off site and on site construction/installation. H2O has demonstrated the ability to install planter boxes faster and to a higher quality standard, whilst producing them in a safer and more controlled work environment.

Architects, designers and developers have the opportunity to work collaboratively with H2O Designs in the development of a project specific planter box system, providing far superior benefits to traditional *in situ* and/or off the shelf planter boxes.

### H2O PLANTER BOX KEY FACTS

#### EASILY FORMED AND SHAPED

Built to suit the exact requirements of the project including dimensions and shapes.

#### LIGHTWEIGHT

Exceptional strength to weight ratio. This provides many benefits to the components and throughout the installation stage of the project.  
Easily Transportable

#### EXTERIOR AND INTERIOR USE

UV resistant, 100% waterproof. Will not degrade in outdoor environments.

#### OFFSITE MANUFACTURE

Less time spent on site by various trades without the mess or need to cleanup.

#### AUSTRALIAN MADE

Designed and manufactured in Australia. High Level of quality control.

#### SIMPLE & QUICK INSTALLATION

No need for heavy machinery, cranes. Light enough to be installed by two men.

#### FINISH

Various finishing techniques are available.

# PLANTER BOX SYSTEMS

LICOM76™



## CUSTOMIZATION

The various levels of customization available to LICOM76™ planter boxes make its application suited to just about any project. Where standard techniques of construction or off the shelf products may fail, it's certain that LICOM76™ planter box systems can be designed to meet the needs of each individual application or project.

### SIZE

- Each planter box is designed and manufactured to suit the dimensions of the project.
- Length, width and height can all be manipulated.

### SHAPE

- Various shapes can be achieved and developed in the design process.



SQUARE



RECTANGLE



ROUND



CURVED



ELBOW



UNIQUE

### FINISH / COLOUR

- Depending on the look of the project, a number of finishing techniques can be used on the planter boxes to suit the desired aesthetics of the project.
- Unlike off the shelf planter boxes, LICOM76™ planter boxes can be finished in any standard paint colour.
- Unique looks like rust and stainless can be achieved using special paints



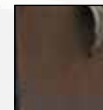
POLISHED  
CONCRETE



PAINTED  
TEXTURE



PAINT  
NON-TEXTURE



RUST



TILED



CONCRETE  
READY FOR  
CLADDING

### DRAINAGE & IRRIGATION PROVISIONS

- According to the requirements of the project, drainage and irrigation penetrations can be incorporated into the planter boxes in a number of ways.

### CUSTOM DESIGN

- LICOM76™ planter boxes can be easily designed to incorporate other architectural products like seating, tables, walls and water features.

# PLANTER BOX SYSTEMS

LICOM76™



## ECO FRIENDLY

H2O Designs planter box systems are an eco friendly alternative to traditional building materials.

### THERMAL PROPERTIES

- Extremely effective insulator
- Reduces core temperature for plants, thus reducing water usage.
- Excellent resistance to air and water

Material (Per Inch)	K Value	R Value
Wood	0.76	1.25
Cement Board	1.92	.052
Poured Concrete	3.9	0.08
Common Brick	5	0.11
LICOM76™	0.03	4.00

### RECYCLABILITY

- Planter boxes can be granulated and recycled
- LICOM76™ is highly inert and will not exude any harmful or toxic emissions when forced to burn

### CONSERVATION

- No timber used in the forming process, thus helping to conserve our forests.
- No wastage on site
- Excellent insulation properties result in lower energy use in all domestic and industrial applications.
- Low weight of planter boxes results in the conservation of fuel consumption in freight and transport.

# PLANTER BOX SYSTEMS

LICOM76™



## SUSTAINABILITY

In the development of LICOM76™, our goal is to give you a sustainable building envelope that gives you far superior results throughout the whole process when compared to conventional building methods.

TIME REDUCTION OF TRADES ON SITE

NO LOSS OF PROJECT TIME DUE TO INCLEMENT WEATHER

REDUCED MATERIAL WASTAGE

NO ONSITE CLEANUP

LESS TRANSPORT ENERGY

REDUCED CARBON FOOTPRINT

ABILITY TO DELIVER HIGHER QUALITY STANDARDS

SAFER AND MORE CONTROLLED WORK ENVIRONMENTS

LESS ON SITE MANAGEMENT ISSUES

# PLANTER BOX SYSTEMS

LICOM76™



## PRODUCT SPECIFIERS AND USERS

LICOM76™ Products have been used in the following projects

### DEVELOPERS / BUILDERS

BOVIS LEND LEASE

WATPAC CONSTRUCTION

SCHIAVELLO

PAYNTER DIXON

BECTON CONSTRUCTION

METRICON HOMES

SIMMONDS HOMES

ISIS GROUP

PREMIER BUILDING GROUP

COX CONSTRUCTIONS

INTERPROJECTS

RENAACENT BUILDERS

PRIMA ARCHITECTURE

BODEN PROJECTS

### ARCHITECTS

SJB ARCHITECTS

DKO ARCHITECTS

DASCH

REDBOX DESIGN GROUP

SMITH MADDEN GROUP

PAUL BANGAY GARDEN DESIGN

JOHN MATYAS ARCHITECTS

JACKSON TEECE

PIKE WITHERS ARCHITECTS

BY ARCHITECTS

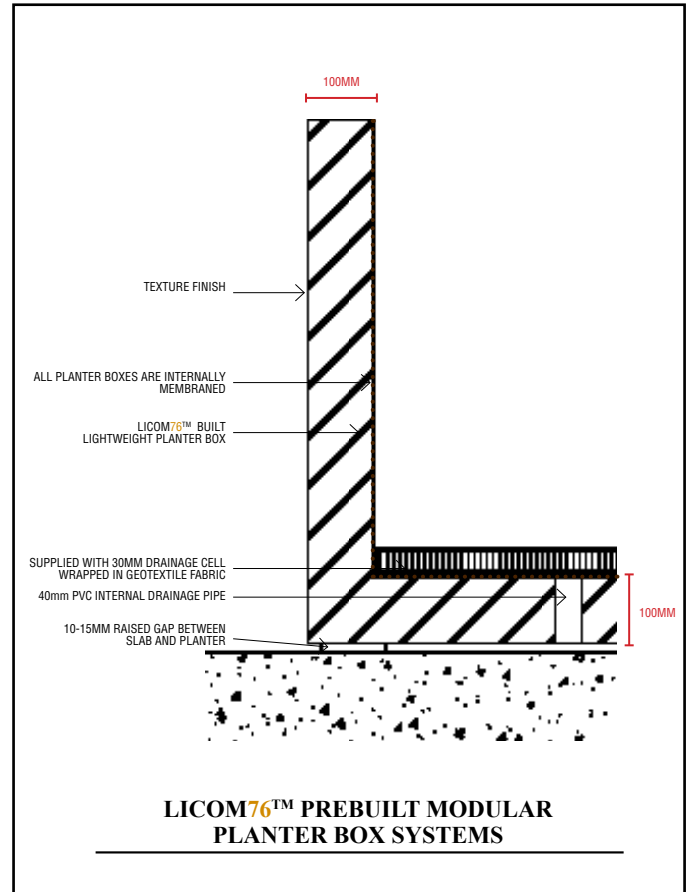
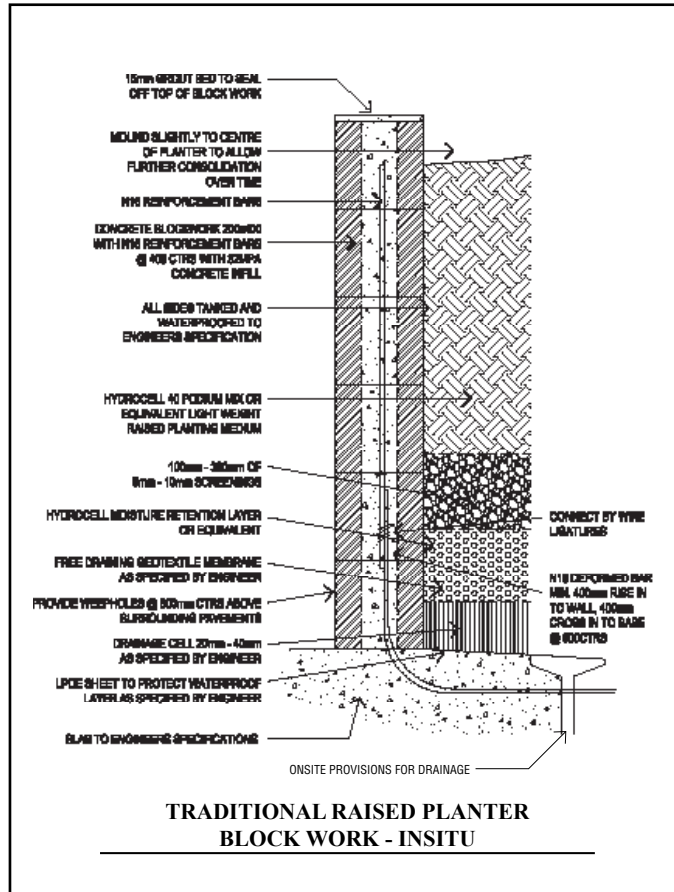
CB RICHARD ELLIS

# PLANTER BOX SYSTEMS

LICOM76™



## PLANTER BOX COMPARISON



## LICOM76™ BENEFITS OVER TRADITIONAL METHODS

### FINISHED PRODUCT

- All planter boxes come finished ready for planting
- Removes any onsite construction processes and tradesmen

### DRAINAGE

- Supplied with pre cast drainage as opposed to allocated drainage onsite
- Excess clean water drains out base and into main drain

### MEMBRANE

- Full membrane of planter box internals
- No leaks or cracks in membrane
- Removes the need for membrane and waterproofing on site

### OFF SITE FINISHING

- All finishes achieved off site
- Greater finishing standard and quality control
- Removes the need for painting / texture on site by tradesmen

### GREATER CHOICE

- Planter areas can be divided into various sized planter boxes to create beautiful garden areas

### NO MESS

- Reduction of trades on sites will mean less mess
- No cost for clean up

### INDEPENDENT TO SLAB

- Planter boxes will not crack over time due to slab movement
- Planter boxes will move with slab

### QUICK INSTALLATION

- Removes the need for any heavy machinery
- Light enough to be installed by two men

# PLANTER BOX SYSTEMS

LICOM76™



## LICOM76™ PLANTER BOX SETUP

VARIABLE WALL THICKNESS

BLACK INTERNAL MEMBRANE

EXTERNAL FINISH

-100% UV stable and waterproof

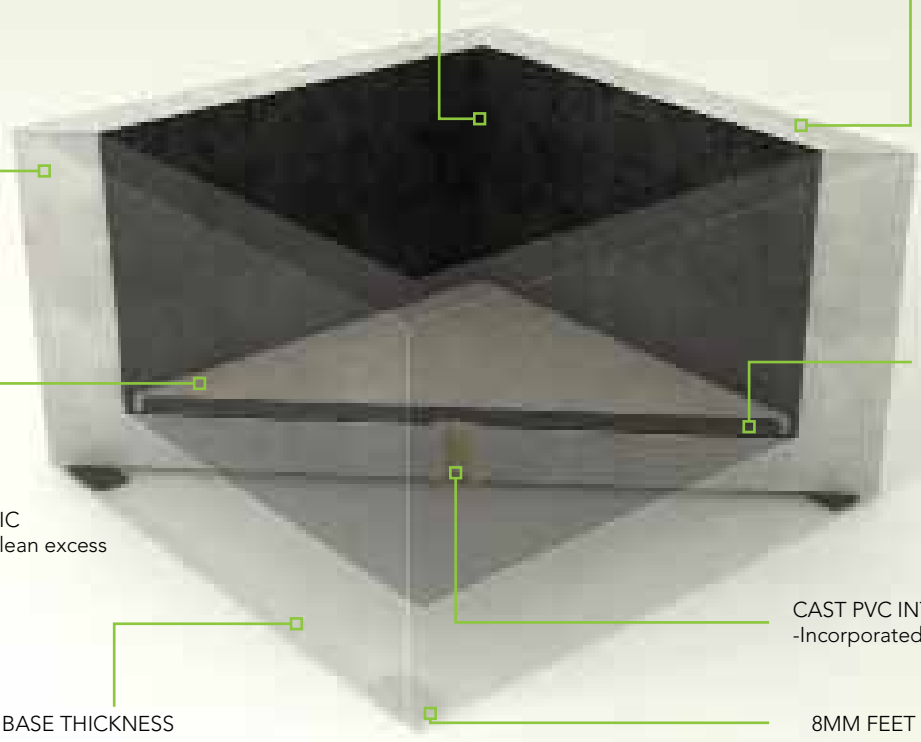
GEOTEXTILE FABRIC  
- Guarantees only clean excess water will drain out

30MM DRAINAGE CELL

CAST PVC INTERNAL DRAINAGE PIPE  
-Incorporated into either base or walls

VARIABLE BASE THICKNESS

8MM FEET = 8MM SHADOW LINE



## IN SITU CONSTRUCTION VS LICOM76™ BUILT PLANTERS

CONSTRUCTION METHOD	FORM WORK	BLOCK WORK	LICOM76™
On Site Procedures:	<ul style="list-style-type: none"> <li>- Steel Fixer (Fix to Slab)</li> <li>- Form Work (Shudders to both sides)</li> <li>- Pour Concrete</li> <li>- Strip Form Work</li> <li>- Plumber (Fit off Internal Drainage)</li> <li>- Waterproofoer (Membrane all internals)</li> <li>- External Texture / Paint</li> </ul>	<ul style="list-style-type: none"> <li>- Steel Fixer (Fix to Slab)</li> <li>- Brick Layer (Form Bricks to Desired Shape)</li> <li>- Corefill Bricks with Concrete</li> <li>- Plumber (Fit of Internal Drainage)</li> <li>- Waterproofoer (Membrane all internals)</li> <li>- External Texture / Paint</li> </ul>	<ul style="list-style-type: none"> <li>- Component Installation and Delivery</li> </ul>



# PLANTER BOX SYSTEMS

LICOM76™



## CONTACT

**H2O Designs**

**ADDRESS:** 18 Sackville Street  
Collingwood, Vic 3066  
Australia

**ROBERT TRUCCOLO:** 0438085713  
**PHONE:** +61 3 9419 6014  
**EMAIL:** [info@h2odesigns.com.au](mailto:info@h2odesigns.com.au)  
[www.h2odesigns.com.au](http://www.h2odesigns.com.au)